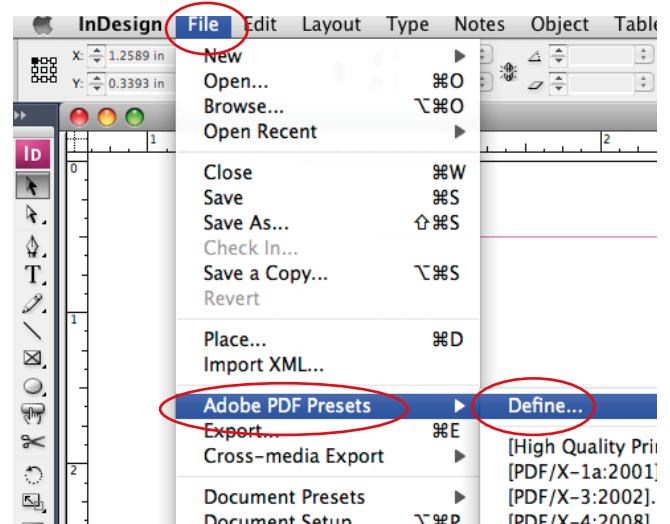


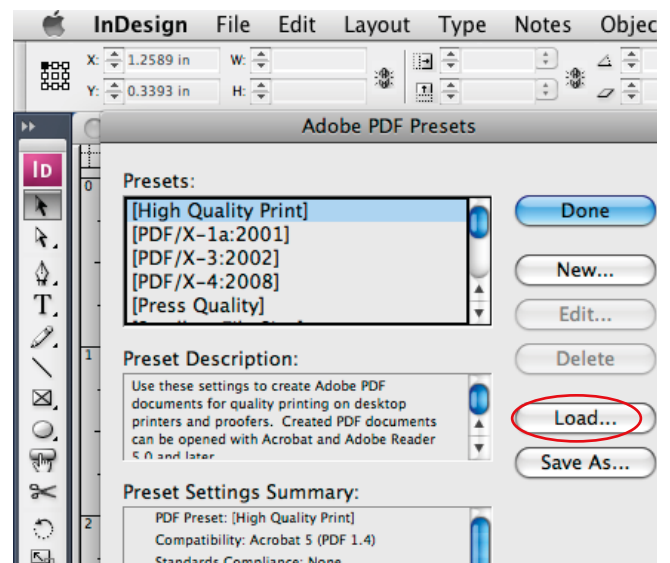
# InDesign CS5, CS5.5, CS6, CC, CC2017

## Importing Export to PDF Presets

### 1. Select, File/Adobe PDF Presets/Define...



### 2. Select, Load.

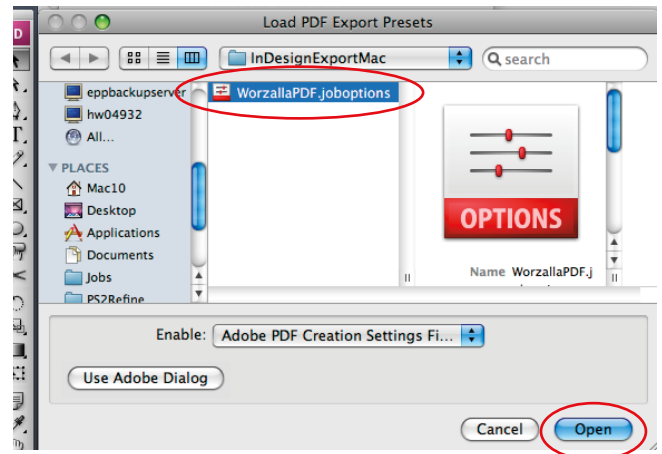


# InDesign CS5, CS5.5, CS6, CC, CC2017

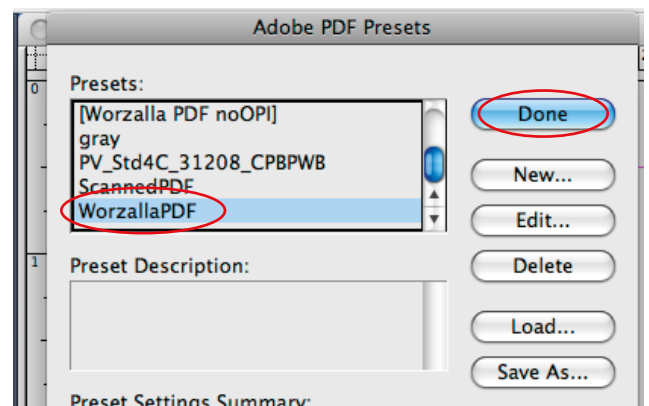
## Importing Export to PDF Presets

### continued..

3. Navigate to where you have placed the downloaded Export settings, select "WorzallaPDF" then select "Open".



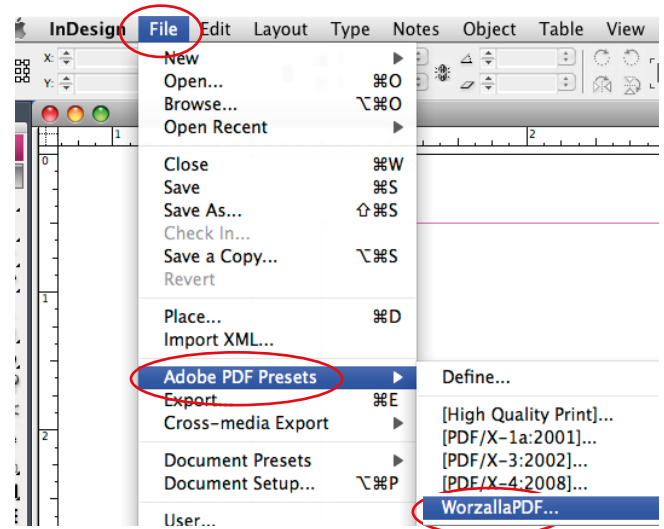
4. You should now see "WorzallaPDF" available in your Adobe PDF Presets window. If so, select, Done.



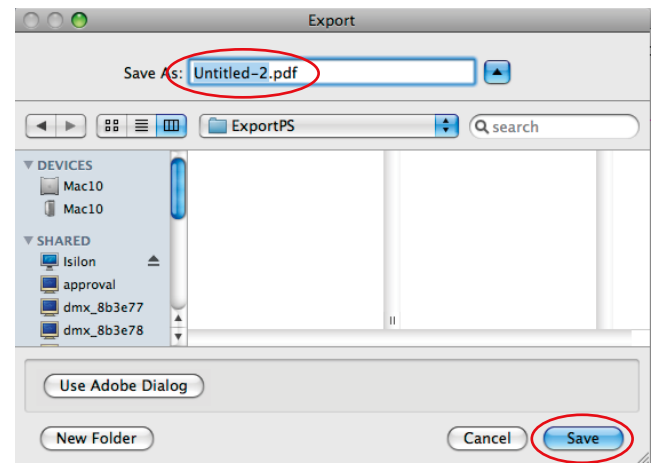
# InDesign CS5, CS5.5, CS6, CC, CC2017

## Exporting a PDF

### 1. Select, File/Adobe PDF Presets/WorzallaPDF



### 2. Identify your PDF file and select the destination you wish your exported PDF to end up. Select "Save"



### 3. A new window will appear, Make sure "WorzallaPDF" is selected as the Adobe PDF Preset, select "Export"

